



Moldex3D
MOLDING INNOVATION

2015 Molding Innovation Day

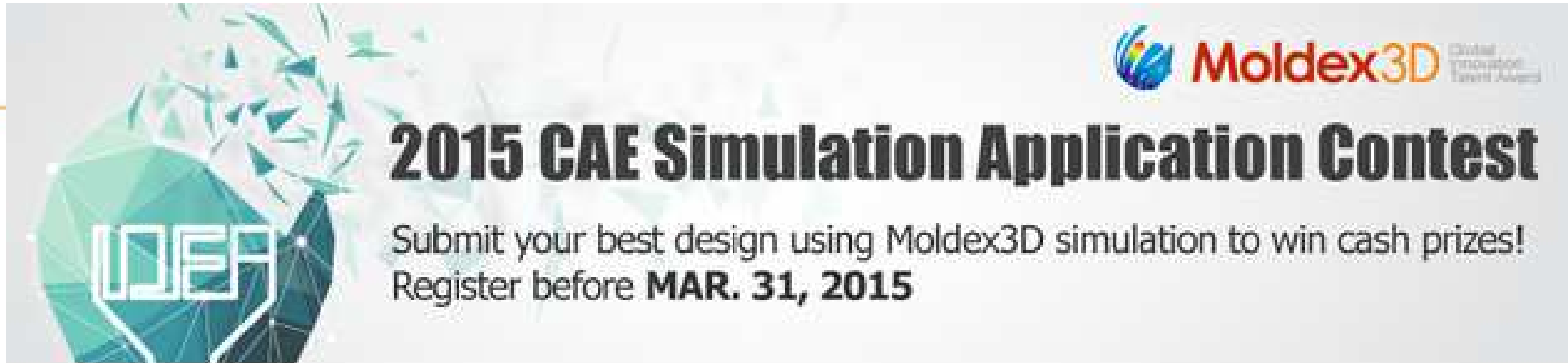


2015 CAE Simulation Application Contest
Submit your best design using Moldex3D simulation to win cash prizes!
Register before **MAR. 31, 2015**

M E C - P L A S T

10 Luglio 2015
POINT Polo per Innovazione Tecnologica
Dalmine Bergamo

Moldex3D Italia srl
Corso Promessi Sposi 23/D -
23900 Lecco (LC)
www.moldex3d.com



Breaking the Mold with Simulation

In Celebration with the 20th Anniversary of Moldex3D.

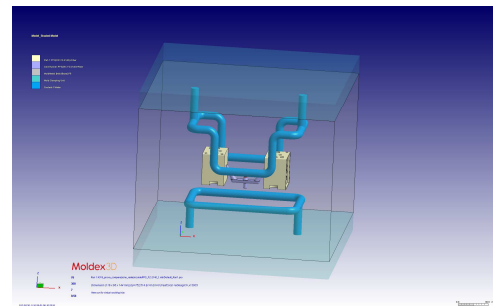
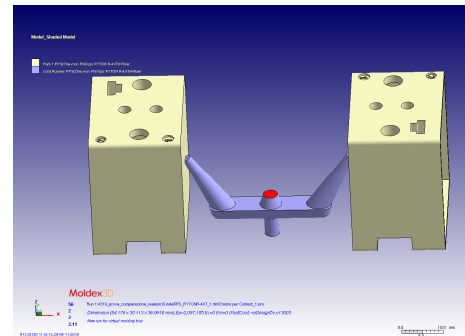
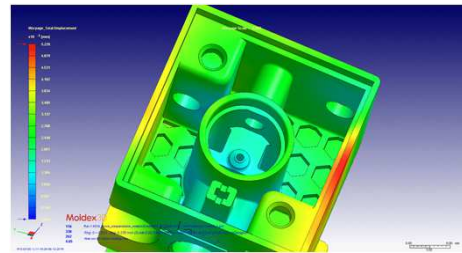
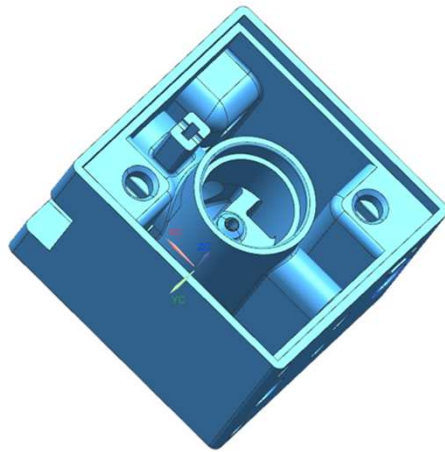
The **2015 Moldex3D Global Innovation Talent Award** is an annual CAE simulation application contest organized by CoreTech System (Moldex3D).

The contest is designed to showcase the most innovative projects based on Moldex3D software.

This is a great opportunity for you to challenge your CAE skills in solving real-world design problems or to put innovative thinking into action.

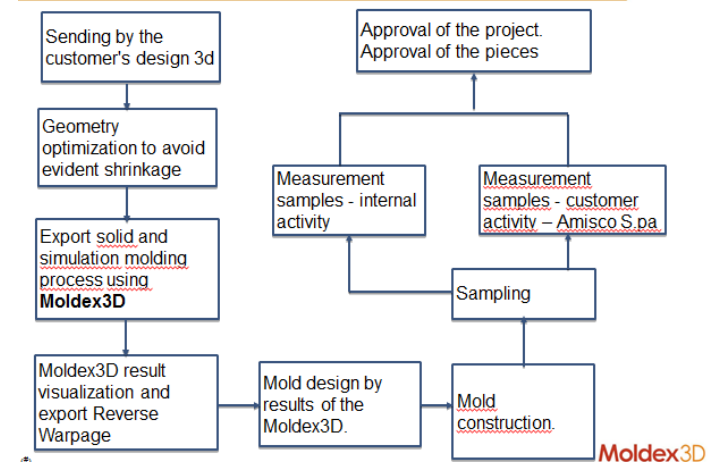
Reverse Warpage with Moldex3D

Molding valve seat parts to specs with CAE simulation tools (Amisco Group)



Housing diameter tube
valve seat subject to
ovalizzazione
(≈ 0.23 mm - Tolerance to
respect + 0,047mm)

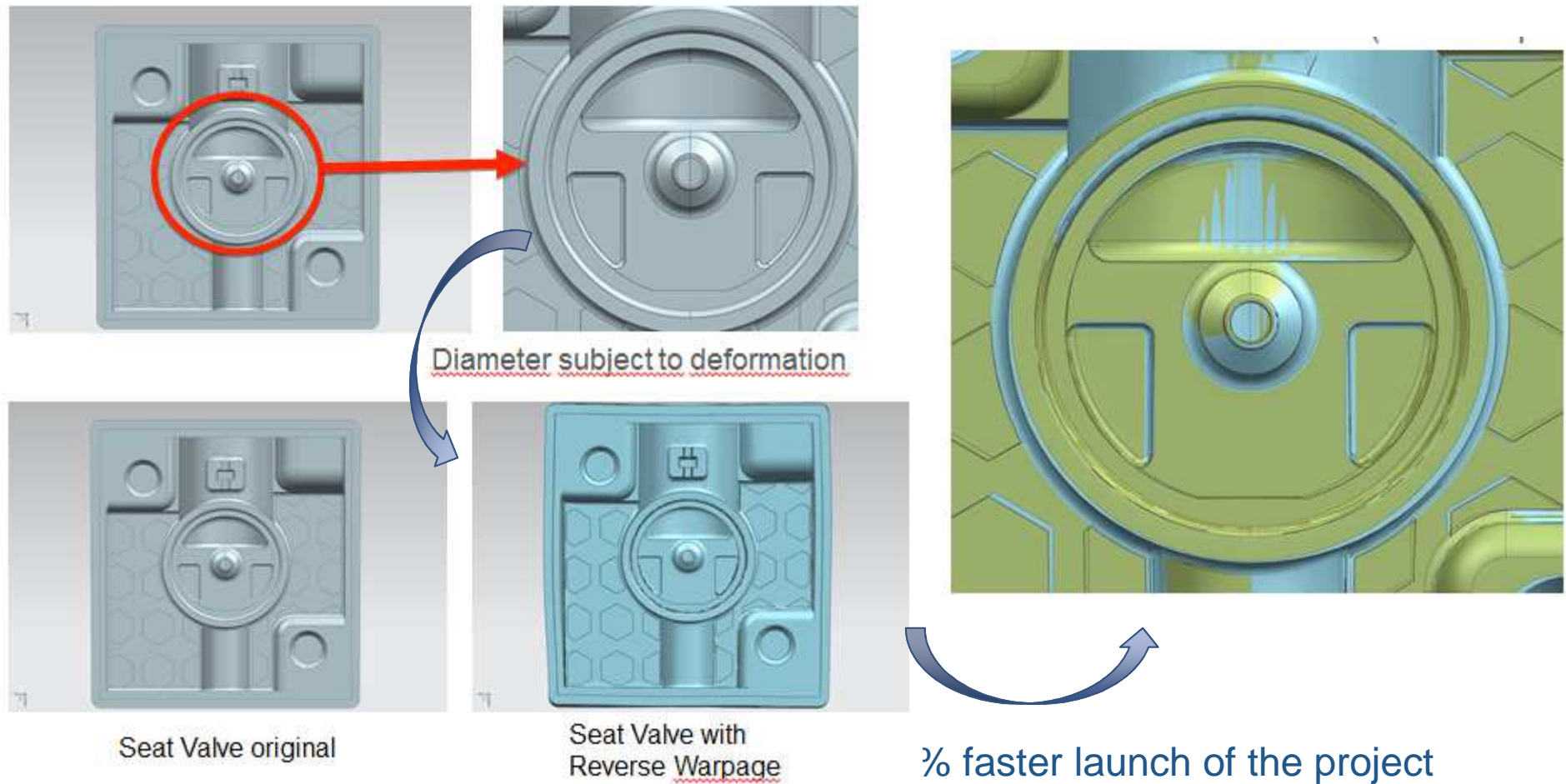
Product Development Process



The use of Moldex3D has reduced by at least 40% faster launch of the project

Reverse Warpage with Moldex3D

The module that during the design phase has been essential is the Warpage. Through the application "Reverse Warpage" the software has been able to generate the deformation that the product would receive during the molding process.

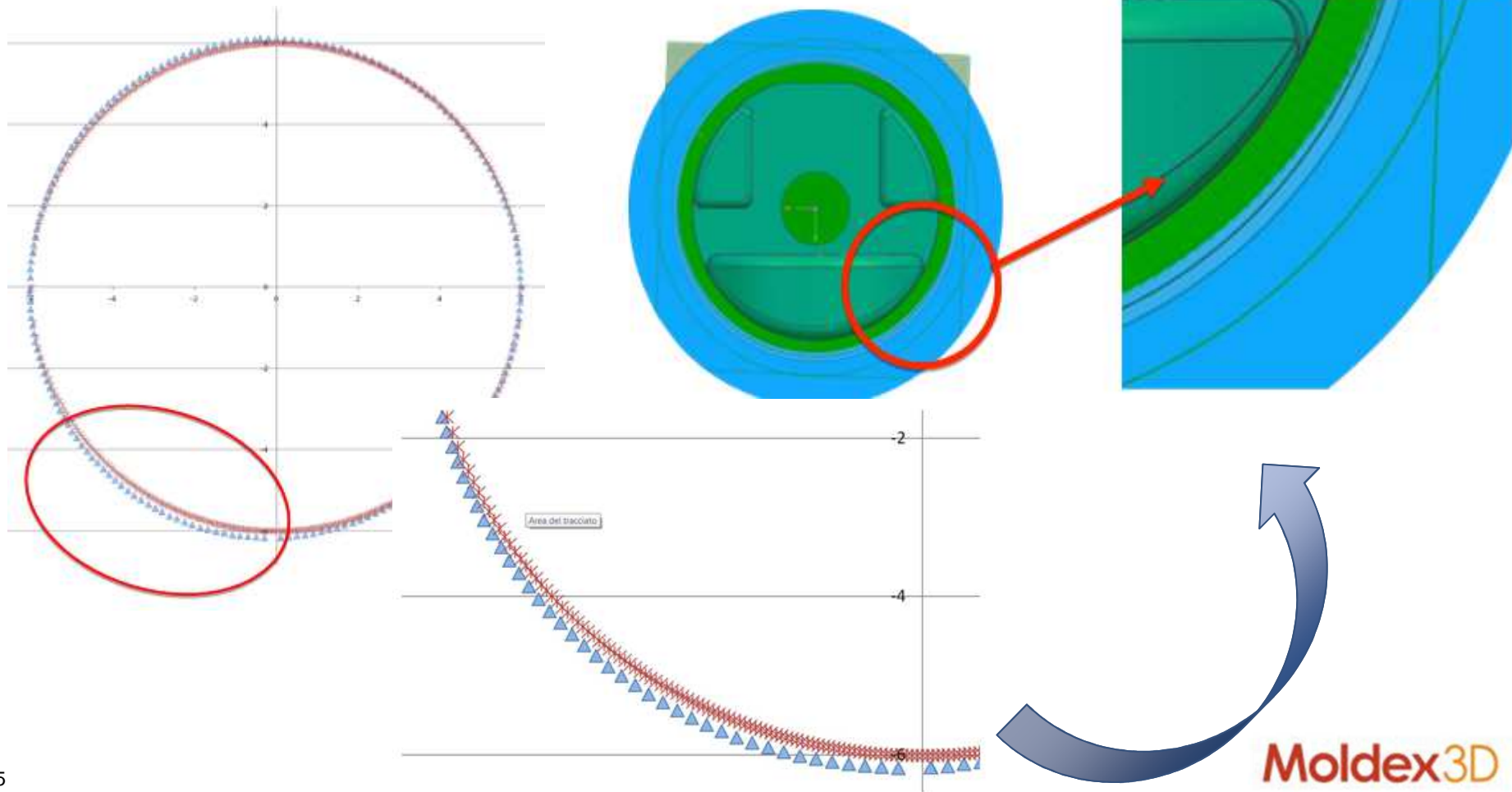


Reverse Warpage with Moldex3D

Extracted the points from the circumference deformed (Moldex3D) and overlaid with ideal circumference.

Pin "spoiled" taking into account the reverse warpage to recover deformation.

CNC machines (Makino V33i) has managed to work the pin diameter central to remove the material in a non-uniform (so as to follow the deformation).



Reverse Warpage with Moldex3D

Blocco 10 MM Cartes. Gradi Decimali Costruito Piano XY
Comment:

Prompt:

Cerchio
p r s e

		Rilevato	Nominale	Superiore	Inferiore
■	Diametro	+12.017	+12.000	+0.047	-0.000
■	Concentricita'	+0.011	+0.000	+0.030	-0.000

Measure-X - [Untitled]

File Modifica Visualizza Unità Reticoli Sensori Misure Costruzioni Part Setup Sistema Aiuto

Min 0.872 Max

LUCE 73% MAG 33.9x

Blocco 2: Cerchio

Rilevazioni Tolleranze

Punti: 36 Modifica Punti

Tipo di Tolleranza: ☒ ANSI ☐ ISO

	Nominale	Superiore	Inferiore
N	+12.000	+0.000	-0.000
X	+100.612	+0.000	-0.000
Y	+32.563	+0.000	-0.000
Z	+54.272	+0.000	-0.000

Forma: ☐ Circolare ☒ Concentrica ☐ Posizione ☐ RFS ☐ MMC ☐ LMC ☒ DE

Profilo: ☐ Profilo ☐ Posizione

Enhanced Editor

Step	Elemento	Coord. X/R	Coord. Y/A	Coord. Z	Rilev. Riferim.
1	A				

Ready to Run

X: +104.713
Y: +37.224
Z: +54.272

Moldex3D

Benefits and Values of Moldex3D

- > Reliable results with reality**
- > Reduction of errors**
- > Ease of use and quick**
- > Save time and Time-To-Market respect**
- > Improved image to the customer**
- > Proactive advice during the design phase**
- > Time to market for new products decreased by 60%**
- > Use of simulation is now mandatory for every project**



Moldex3D ²⁰¹⁵
Global
Innovation
Talent Award

CoreTech System Co., Ltd.

Certifies that

MEC-PLAST sas di Ivan Missaglia & C.

Is a Finalist in the

2015 Moldex3D Global Innovation Talent Award Contest

Granted Jun 29, 2015

Venny Yang
President

Moldex3D
MOLDING INNOVATION



Moldex3D

MOLDING INNOVATION

LinkedIn

facebook

YouTube

g+



Blogger

Moldex3D Italia srl
Corso Promessi Sposi 23/D
23900 Lecco (LC)
www.moldex3d.it



CoreTech System Co., Ltd.
www.moldex3d.com